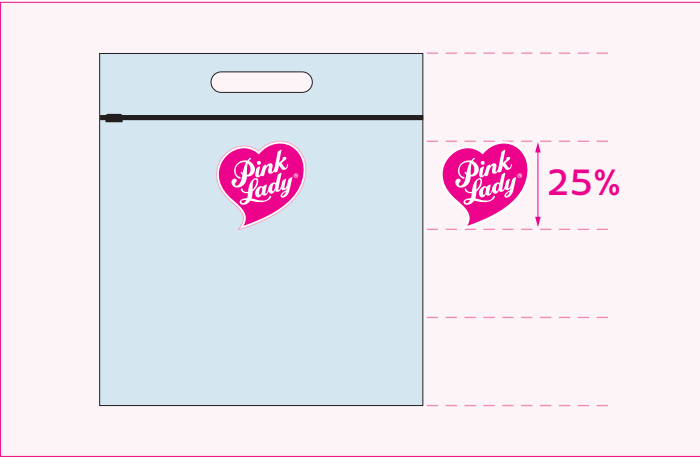


Pink Lady® Packaging Templates
1kg Pouch Front of Pack Construction

Packaging must be approved by your regional master licensee before printing

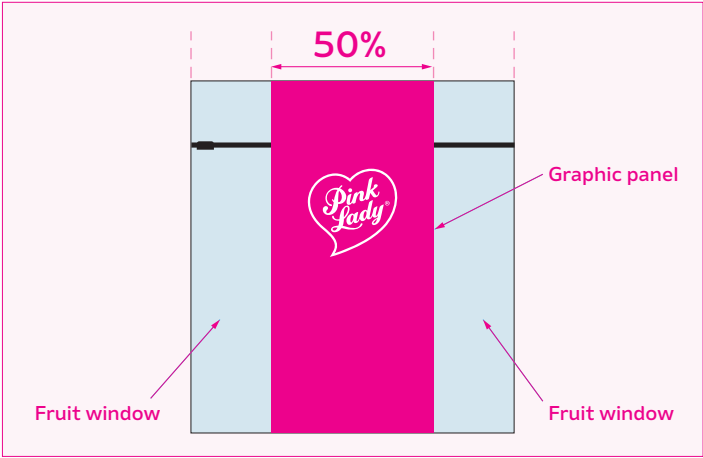
Contact your regional Master Licensee should you have any questions about packaging artwork.

1. Logo size



Logo = 25% pack height

2. Graphic panel



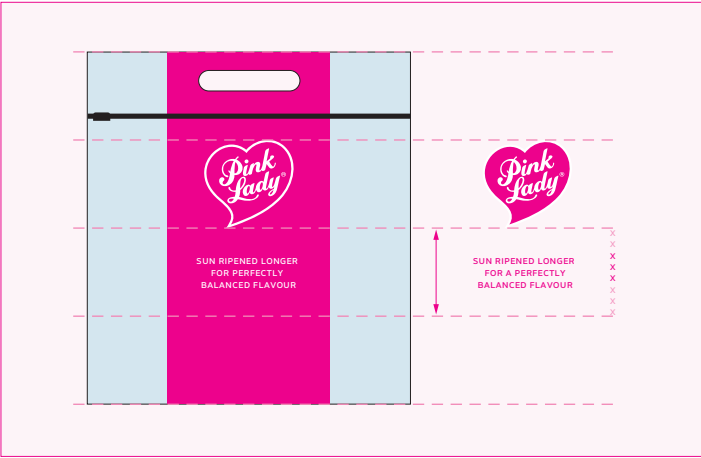
Graphic Panel = 50% of pack width.
Fruit window is kept clear of any printing.

3. Sun-ripened statement



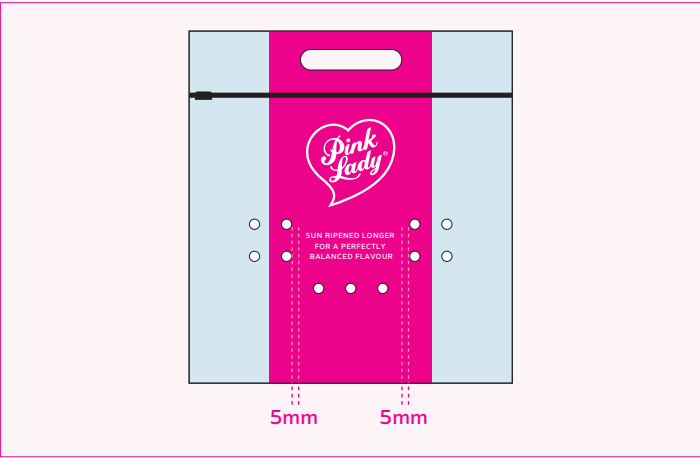
Sun-ripened statement = 8 lines equal to logo height.

4. Place logo & statement



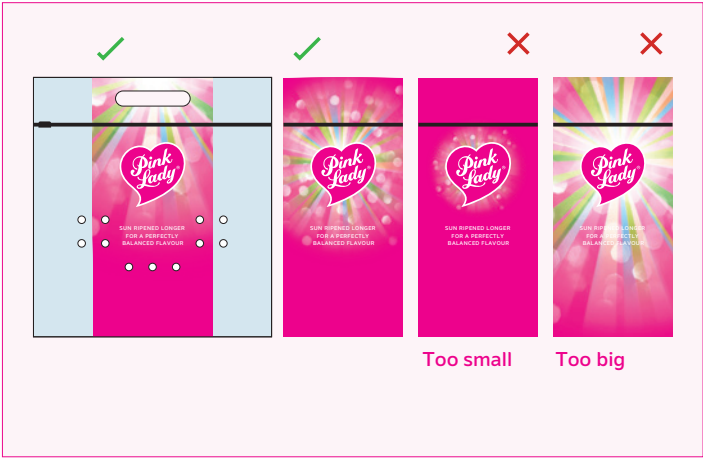
Use a 4 row grid to align the logo and sun-ripened statement on the front pack facing.

5. Avoid breather holes



To avoid any breather holes, adjust the size of the sun-ripened statement if required.

6. Size sunshine



Size the sunshine device so that it finishes just behind the sun-ripened statement without affecting readability. Avoid making the sunshine device too large or too small.

7. Weight/volume/Trust Mark



Place weight/volume and Trust Mark in the bottom row. Allow space for margins away from the edge and any breather holes.

Note: Only use the Secondary Trust Mark when the 'Sun Ripened Longer...' statement appears on the same panel.

8. Region specific information



Adjust layout to accommodate any regional specific pack information while maintaining the size of the logo.

